

# Connector Ahead



[www.connectorjpa.net](http://www.connectorjpa.net)



# Capital SouthEast Connector Project

## El Dorado Hills Workshop #2



# Agenda

- Welcome/Introductions
- Meeting Overview
- Community Values & Concerns (Feedback from Mtg #1)
- Traffic Information
- Environmental Process
- Alignment Discussion
- Aggregate Mining Truck Management Plan Process
- Q & A
- Ongoing Communication



# Community Values

What do you like about your community today?

What do you want to see preserved in your community?



# Community Values

- Relaxed, rural lifestyle
- Community
- Balanced mix of uses
- Environmental and air quality
- Schools
- Residential areas
- Low crime
- Community Development, Business Park



# Community Values

- Mobility
- Close proximity to Sacramento, Sierras
- Light rail convenient
- Village concept
- Maintain current traffic density
- Quality of life
- Community Services and Fire Department



# Community Values and Concerns- Four Seasons

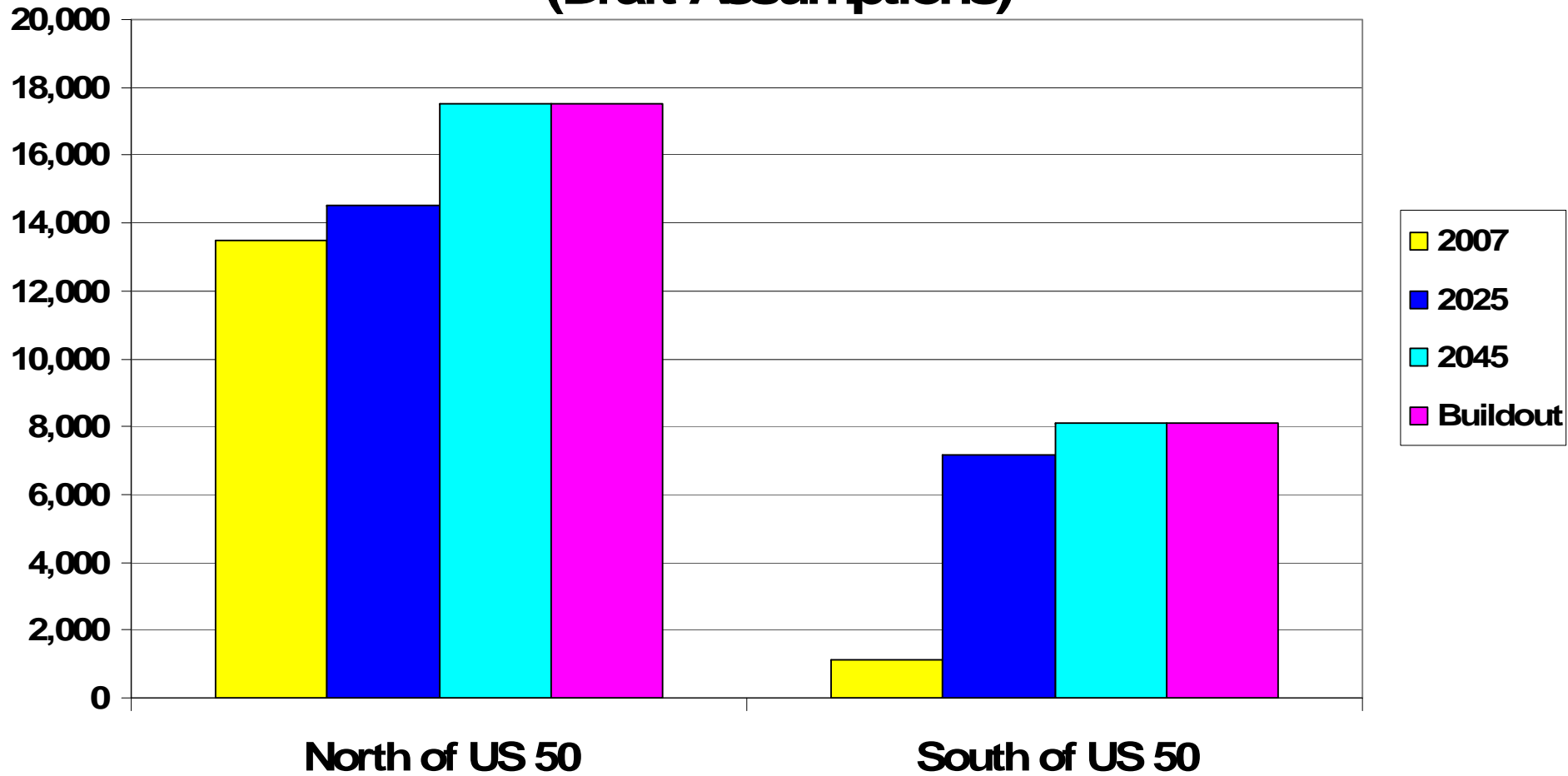
- Quietness
- Safety
- Traffic Congestion
- Easy Access
- Rural vs. Urban



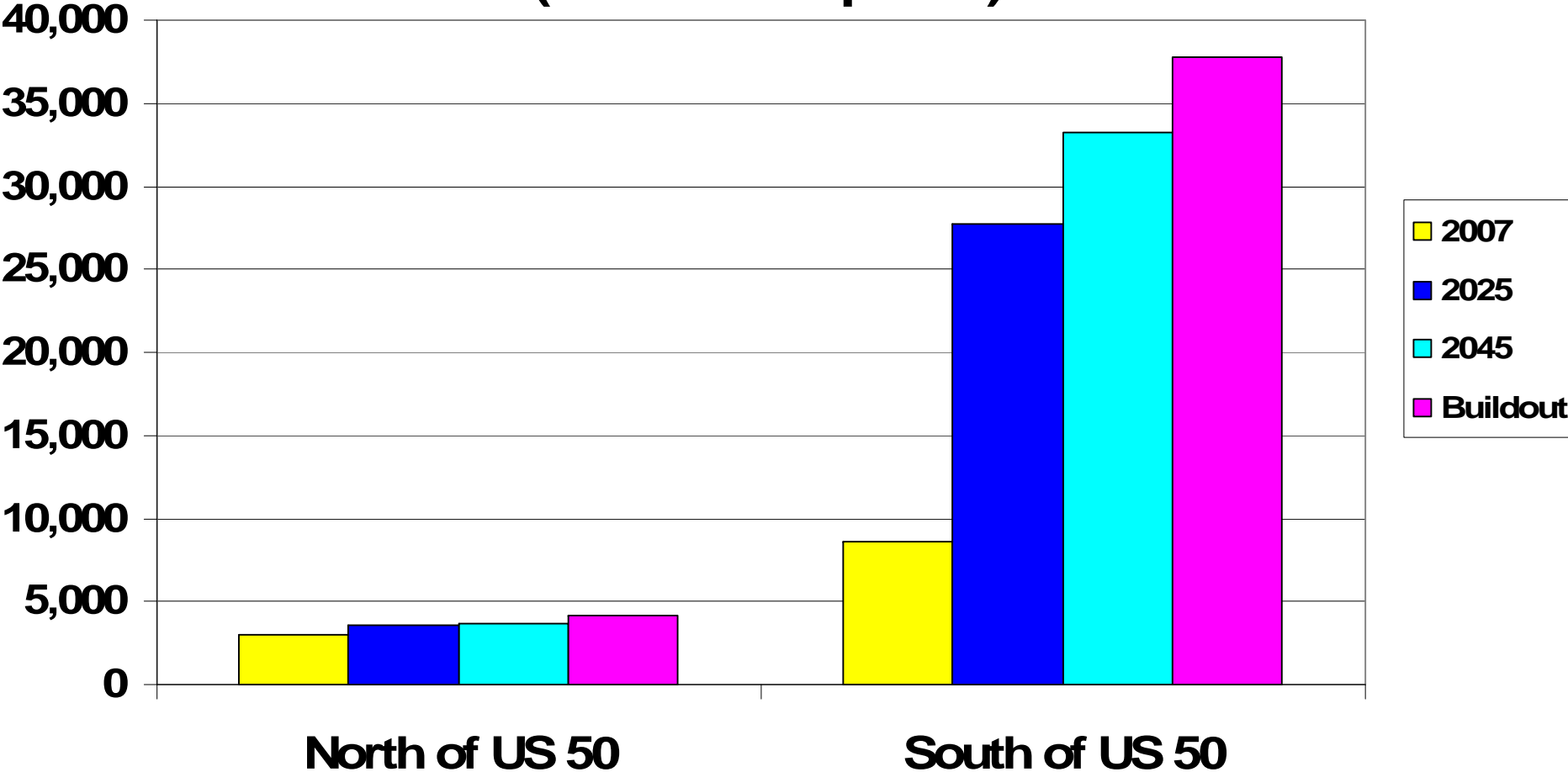
# Traffic Information

- Planned Land Use
- 2045 Traffic Volumes
- Traffic Distribution 2045 No Build & High Concept

# Housing Units in El Dorado Hills/Latrobe Area (Draft Assumptions)



# Employment in El Dorado Hills/Latrobe Area (Draft Assumptions)





# 2045 No Build and Draft High Concept

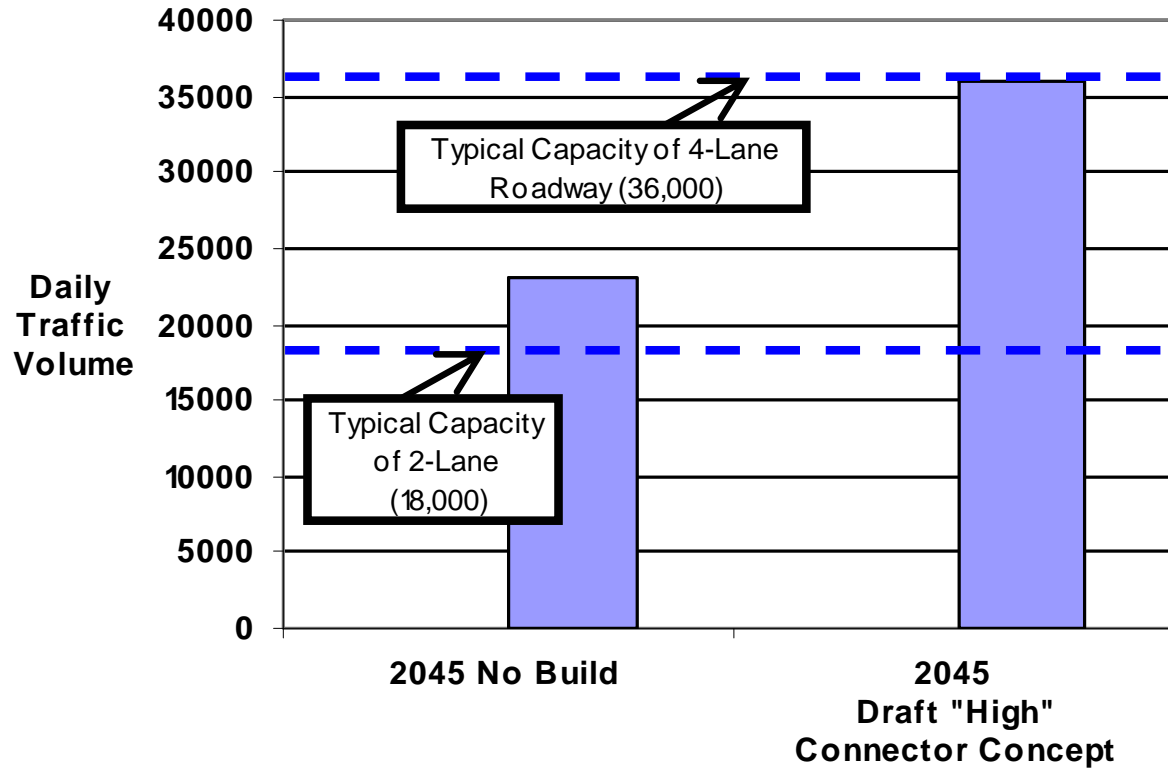
## 2045 No Build

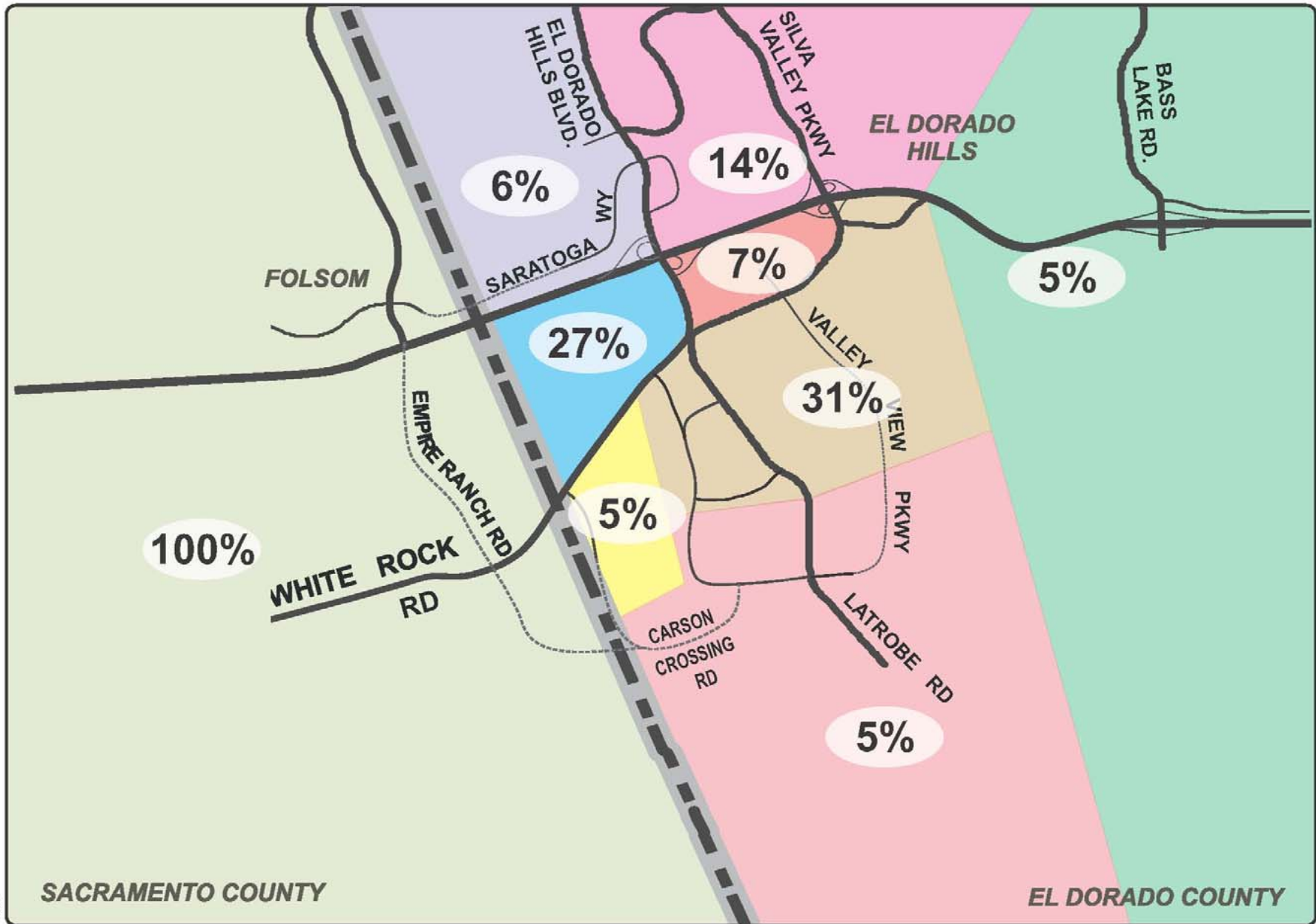
- Reflects General Plans and MTP
- Includes Latrobe Rd to White Rock Rd Connection
- White Rock Road planned to be:
  - 6-lane arterial from Silva Valley Road to Latrobe Road
  - 4-lane arterial from Latrobe Road to County Line
  - 4 or 6 lane arterial west of County line (yet to be determined)

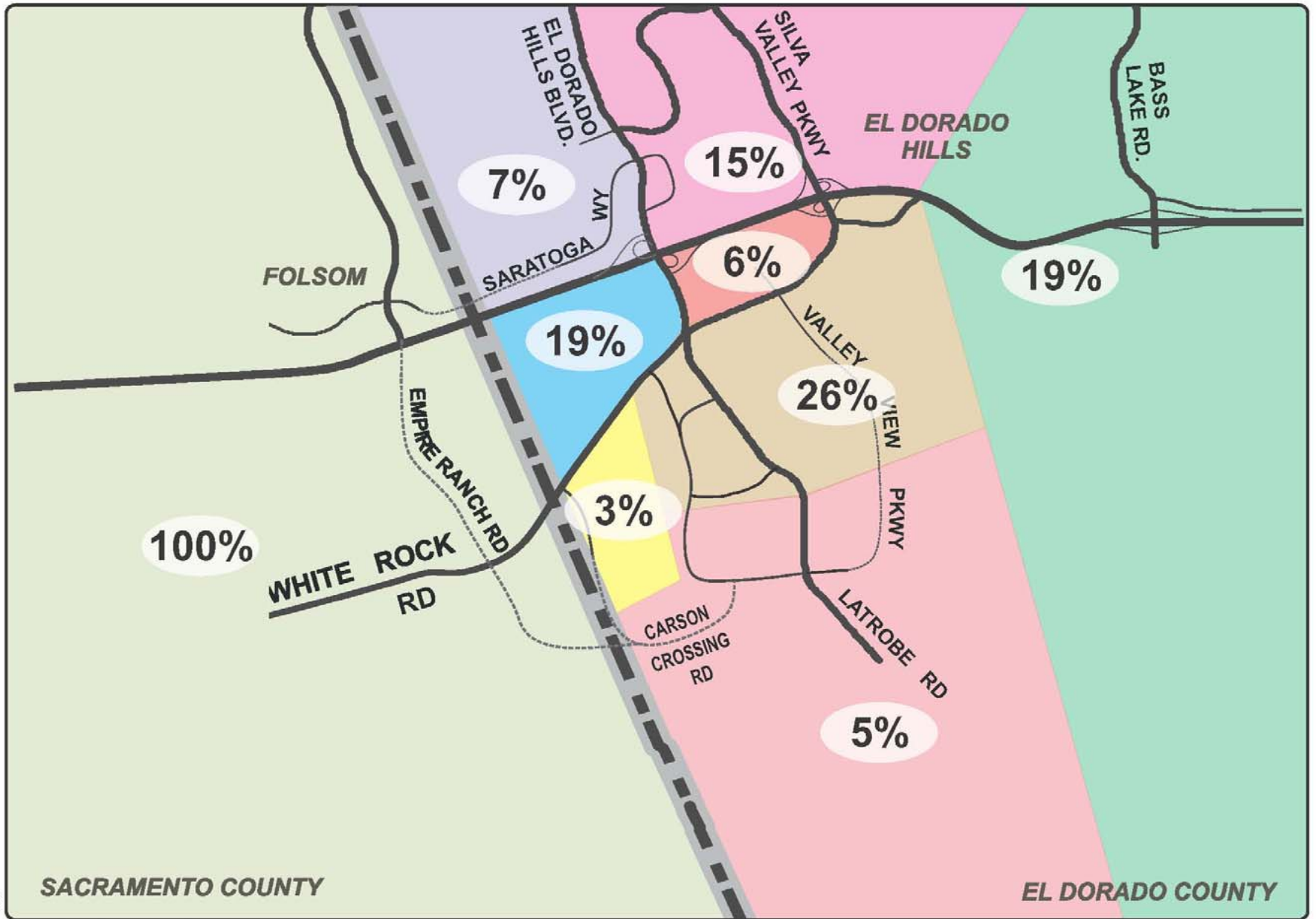
## 2045 with High Connector Concept

- Includes Latrobe Rd to White Rock Rd Connection
- White Rock Rd planned to be:
  - 6-lane arterial from Silva Valley Road to Latrobe Road
  - 4-lane arterial from Latrobe Road to County Line
  - 4 expressway west of County line

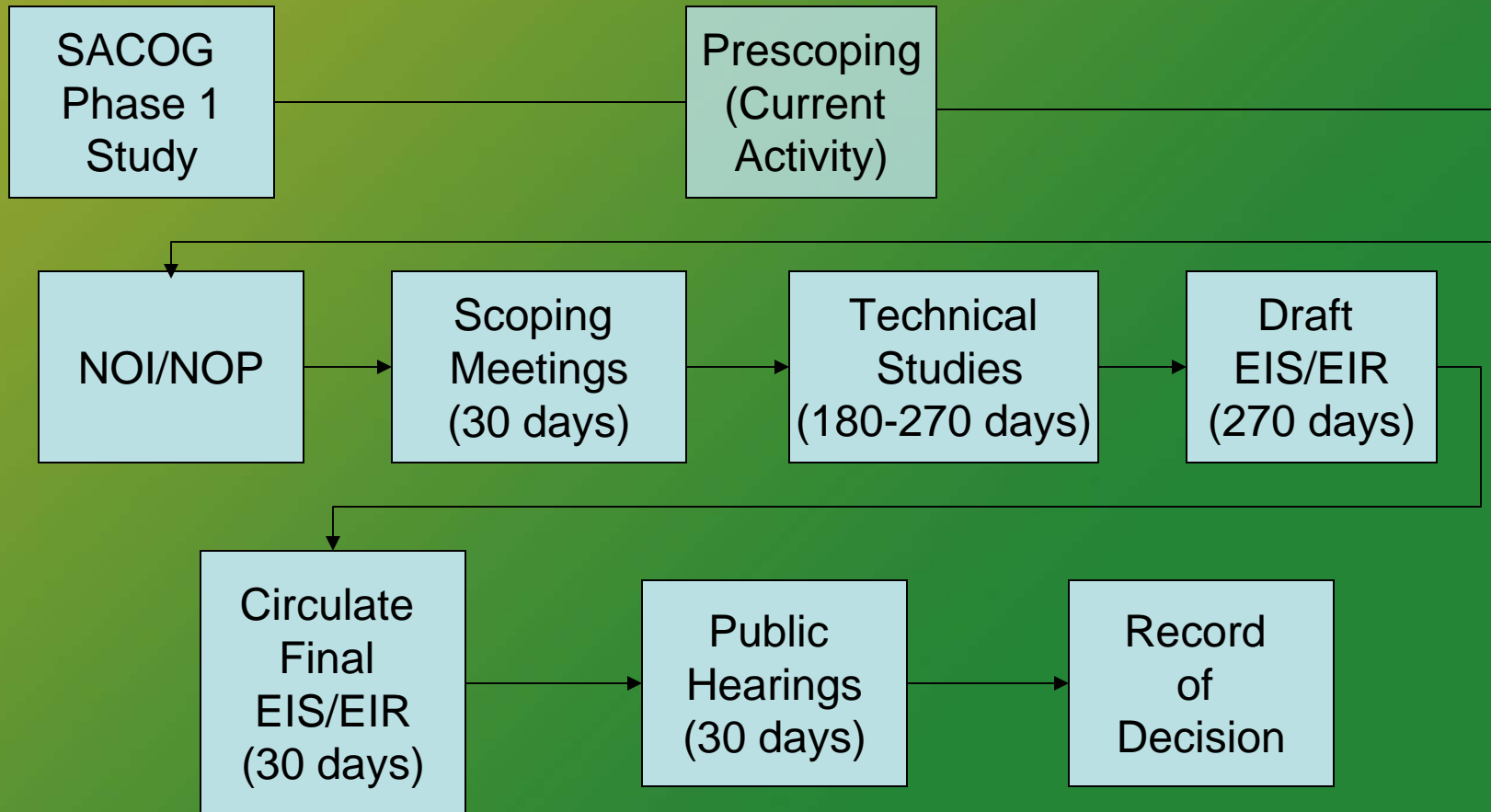
# Average Daily Traffic Volumes White Rock Road at County Line







# Environmental Process





# Environmental Factors

- Physical Environment
- Human Environment
- Biological Environment



# Agency Involvement

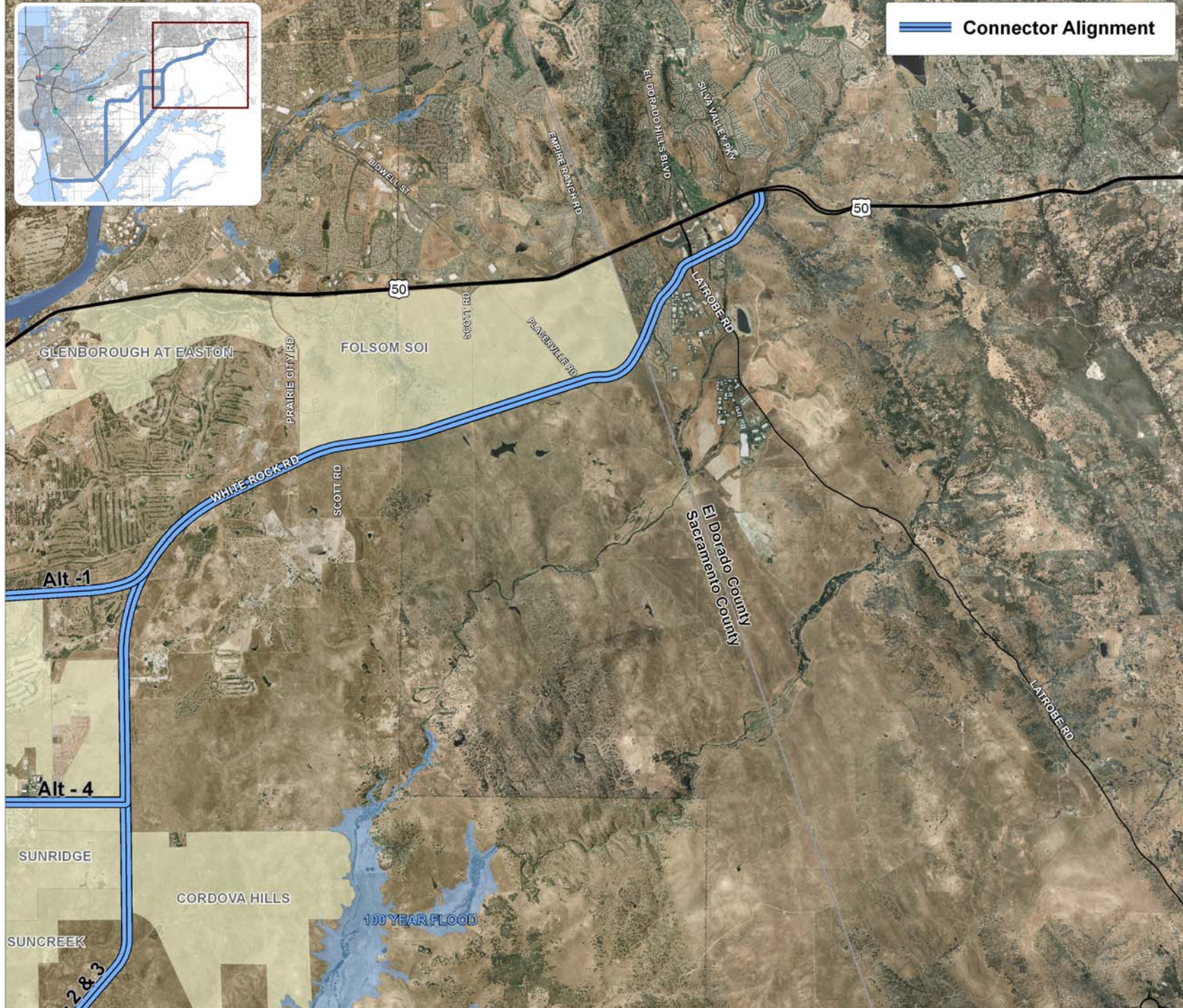
- California Department of Transportation
- U.S. Environmental Protection Agency
- U.S. Fish and Wildlife Service
- National Marine Fisheries Service
- U.S. Army Corp of Engineers
- Regional Water Quality Control Board
- State Department of Fish and Game
- State Historic Preservation Office
- Regional Transit
- El Dorado County, Sacramento County, Folsom, Rancho Cordova, Elk Grove



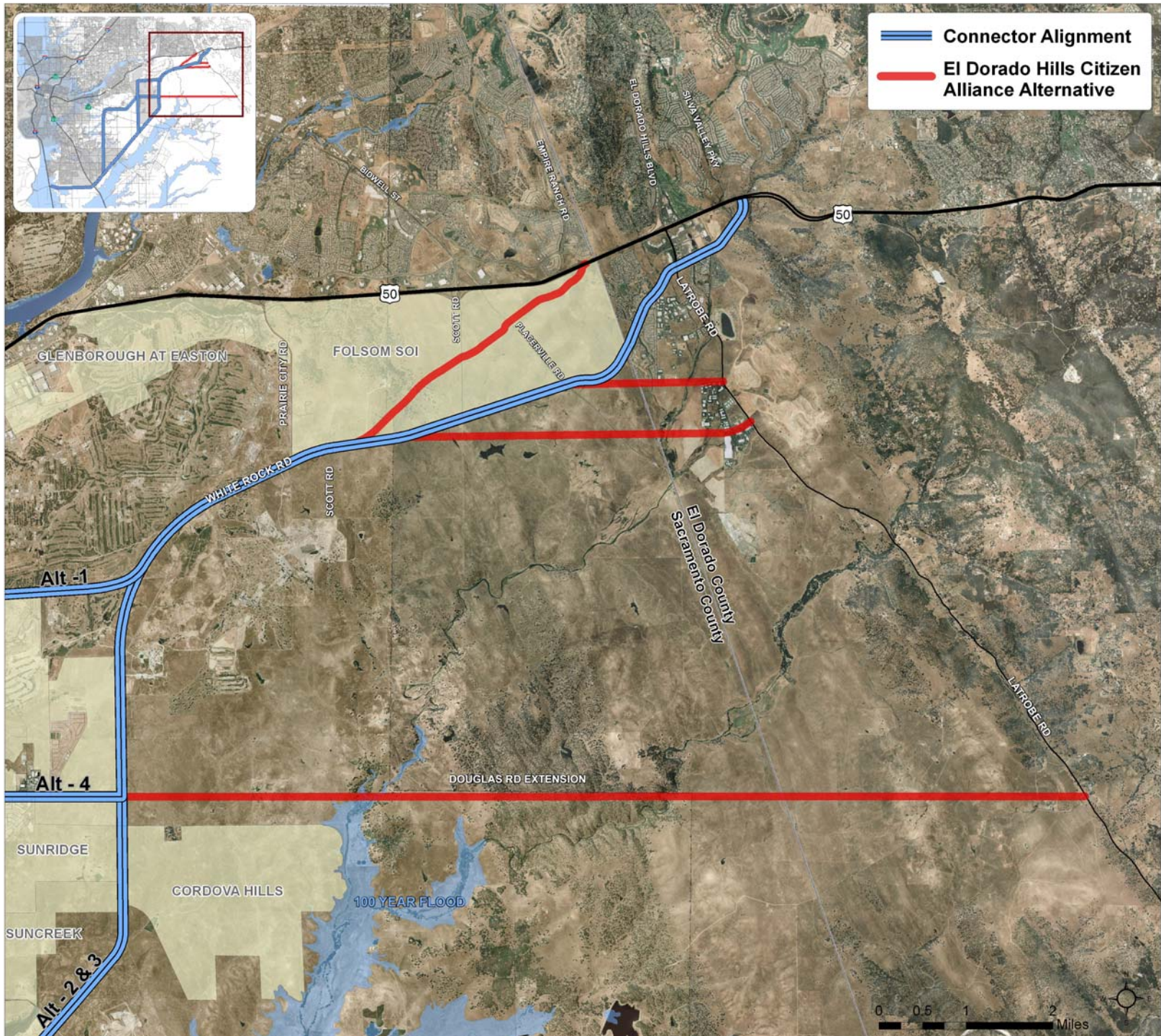
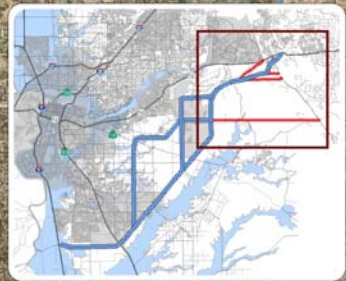
# Alignment Discussion

- Connector Alternative Alignment
- EDH Citizen's Alliance Alternatives
- Connector Alternative Evaluation

 Connector Alignment

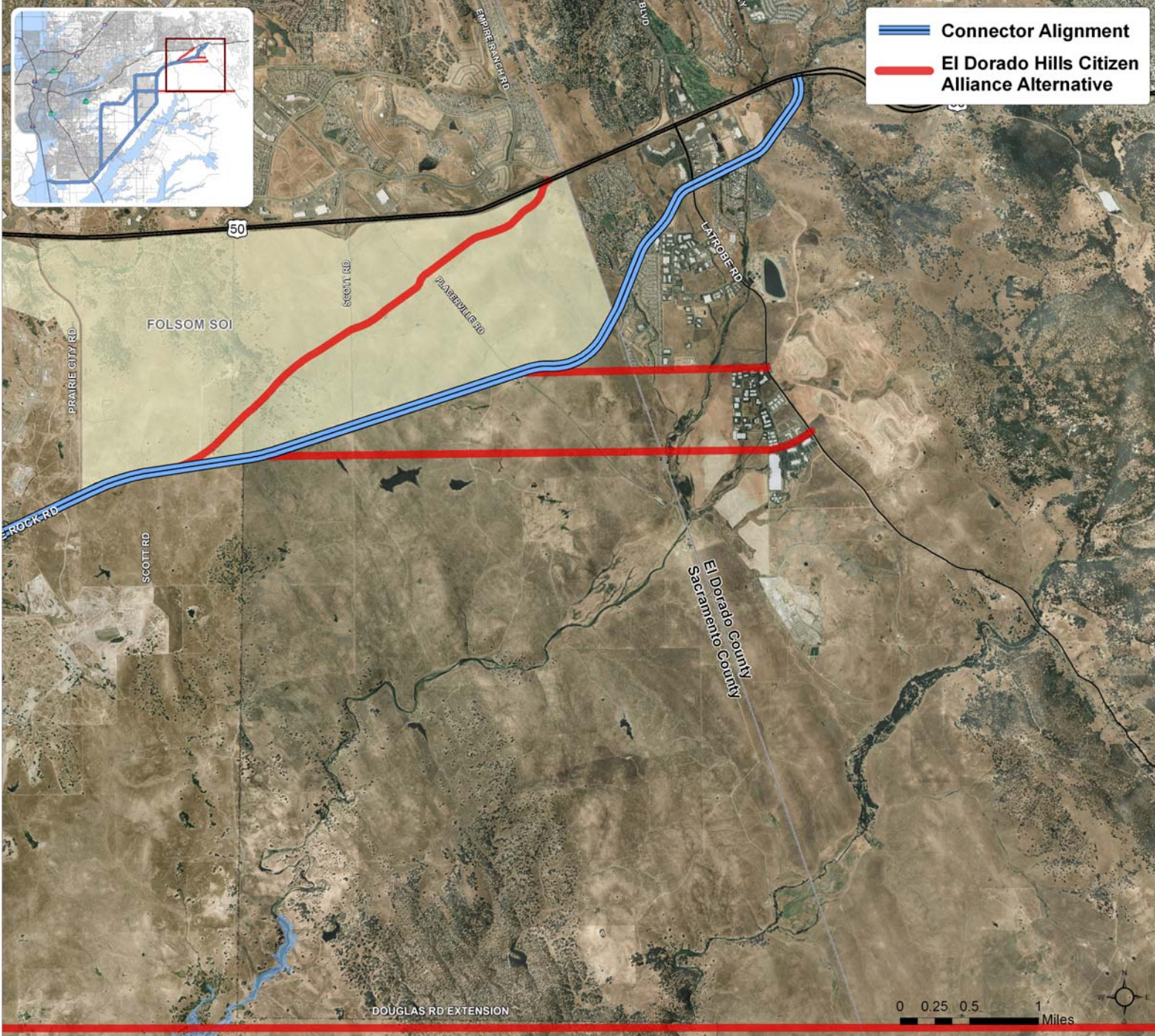


-  Connector Alignment
-  El Dorado Hills Citizen Alliance Alternative





**Connector Alignment**  
**El Dorado Hills Citizen Alliance Alternative**





# Connector Alternative Evaluation

- Utilizes existing right of way
- Consistent with General Plan
- Supports planned growth
- Improves accessibility to job centers, commercial areas and residential areas
- Provides efficient multi-modal options
- Preserves Open Space
- Minimizes growth inducement



# East Sacramento Region Aggregate Mining Truck Management Plan

## Goals:

- To plan, phase, fund and implement roadway improvements needed to accommodate the mobility needs of the east county quarries, Greencycle and the traveling public to meet the given demand.
- To consider creative transportation solutions that are sensitive to affected existing and future land uses while minimizing out of way travel.
- To promote stakeholder collaboration and cooperation.



# Aggregate Mining Truck Management Plan Participants

- El Dorado County
- Sacramento County
- City of Folsom
- City of Rancho Cordova
- Folsom SOI
- Capital Southeast Connector JPA
- Teichert
- Granite
- De Silva Gates



- Questions?



[www.connectorjpa.net](http://www.connectorjpa.net)

# Ongoing Communications



[www.connectorjpa.net](http://www.connectorjpa.net)