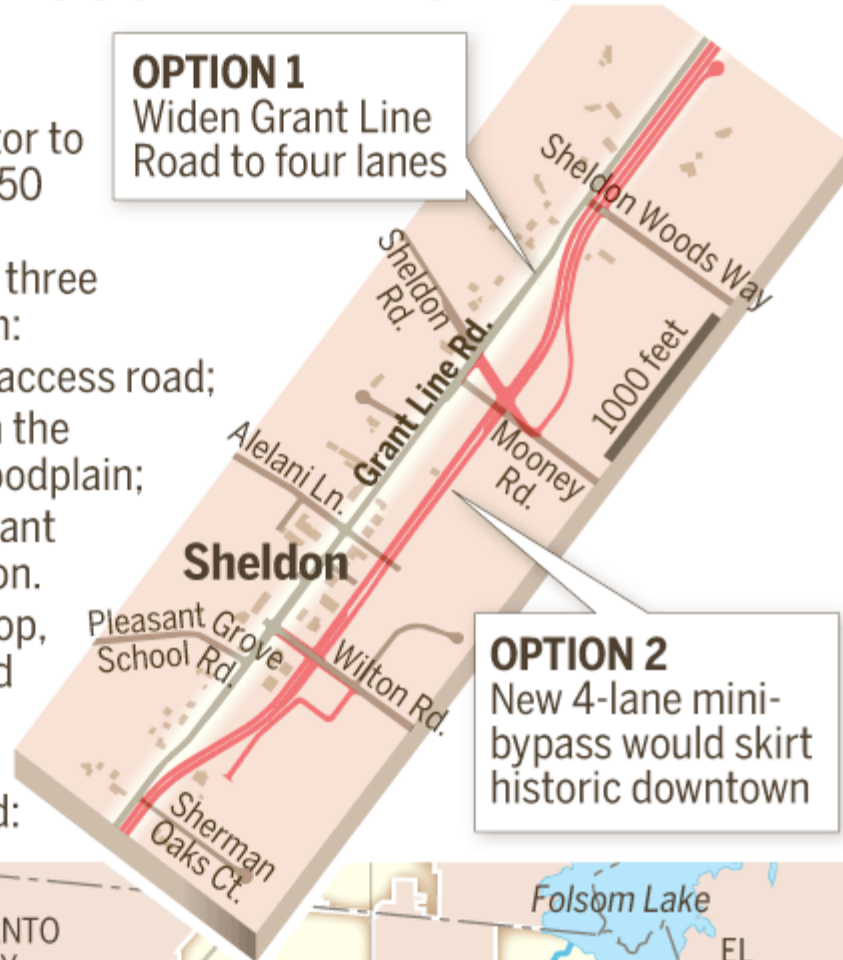


CUTTING THROUGH HEART OF TOWN

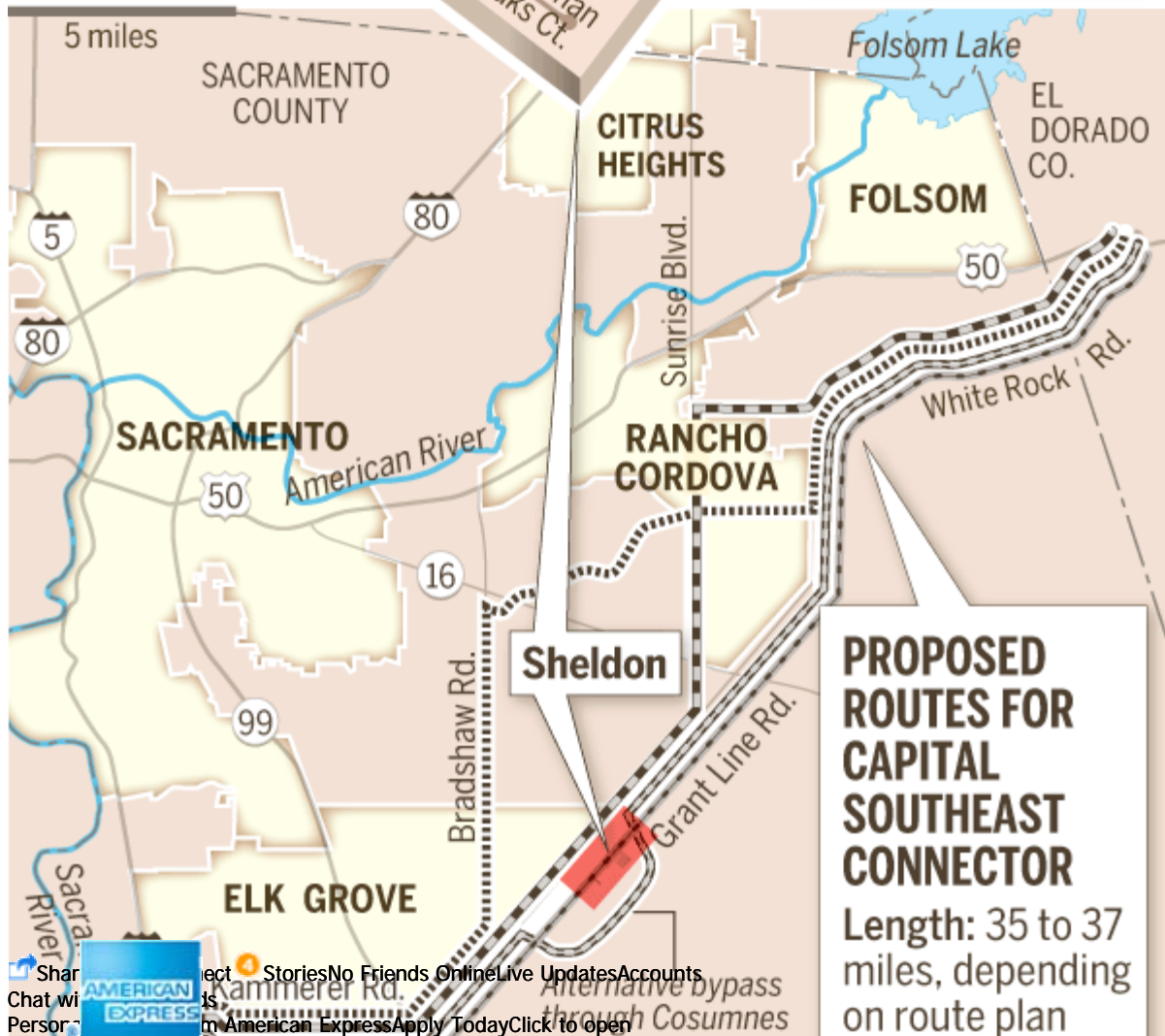
A section of the proposed Capital Southeast Connector to link I-5 to Highway 50 would cut through Sheldon. There are three choices for Sheldon:

- A 4-lane, limited-access road;
 - A bypass through the Cosumnes River floodplain;
 - No changes to Grant Line Road in Sheldon.
- At a recent workshop, residents discussed options 1 and 2 for the 4-lane limited-access road:



OPTION 1
Widen Grant Line Road to four lanes

OPTION 2
New 4-lane mini-bypass would skirt historic downtown



PROPOSED ROUTES FOR CAPITAL SOUTHEAST CONNECTOR
Length: 35 to 37 miles, depending on route plan

Share this story with your friends and family. [Facebook](#) [Twitter](#) [LinkedIn](#) [Email](#) [Print](#) [More](#)